



Honda Portable Charging Kit User's Information Manual

Introduction

Thank you for purchasing this genuine accessory.

Please read this manual carefully before using the Honda portable charging kit. Keep it in the glove box for future reference.

This manual contains important information about the safe operation of the battery charger. We urge you to read this manual carefully, become familiar with the features it describes, and follow its recommendations.

In addition to this manual, follow and comply with local regulations and standards relating to operation and environmental protection.

This manual should be stored in the glove box and remain with the charger at all times.

A Few Words About Safety

Your safety, and the safety of others, is very important. Operating your vehicle's accessory safely is an important responsibility.

To help you make informed decisions about safety, we have provided operating procedures and other information on labels in the vehicle owner's manual and in this manual. This information alerts you to potential hazards that could hurt you or others.

Of course, it is not practical or possible to warn you about all the hazards associated with operating or maintaining your vehicle. You must use your own good judgment.

For your safety and safety of others, pay special attention to all warning symbols. Failure to follow the warnings contained in this manual can result in damage to your vehicle, serious injury, or death.

Warning Symbols

DANGER

You **WILL** be **KILLED** or **SERIOUSLY HURT** if you don't follow instructions.

WARNING

You **CAN** be **KILLED** or **SERIOUSLY HURT** if you don't follow instructions.

CAUTION

You **CAN** be **HURT** if you don't follow instructions.

NOTICE

You **CAN** damage your vehicle, other property or the environment.

Contents

- 1 Warranty and Liability..... 5**
- 2 Safety Information..... 6**
- 3 Using Honda Portable Charging Kit..... 7**
 - 3.1 Indicator Light..... 7
 - 3.2 Charging Your Vehicle 8
 - 3.3 Auto Restart 11
- 4 Care Instructions..... 12**
- 5 Troubleshooting 13**
- 6 Technical Data 18**
 - 6.1 Label Product ID SAE..... 18
 - 6.2 Unit Description..... 18
 - 6.3 Safety Features 19
- 7 Disposal 21**
- 8 FCC Information 22**
- 9 Customer Service Information..... 23**

NOTICE

- Honda shall not assume liability for defects or damage that are the result of the operating instructions being disregarded. This liability exclusion particularly applies for:
 - Improper use.
 - Use of non-original spare parts.
 - Unauthorized conversion of the unit without permission from Honda.
 - Improper disposal after decommissioning.
- In case of any claims, defects or damage to your product, you may contact your Honda dealer or contact the Honda Help Center at: <https://mygarage.honda.com/s/help-honda>.
- The Honda portable charging kit should not be operated at altitudes of more than 13,123 ft. (4,000 m) above sea level.
- Warranty period: 3 years

2 Safety Information

The Honda portable charging kit is an easy-to-use, compact portable power supply for electric vehicle. The charger supplies and manages AC power to your electric vehicle and is compatible with a variety of battery electric vehicles and plug-in hybrids.

The charger operates from a 120 – 240 VAC (Single Phase) 50 – 60 Hz power source.

Key features:

- Compact portable design
- Overheating protection
- Quick-read status indicators
- Multiple adapters available for versatile usage in a variety of locations
- Overvoltage protection
- Globally certified according to established regulatory bodies
- Energy Star Certified, RoHS and REACH Compliant

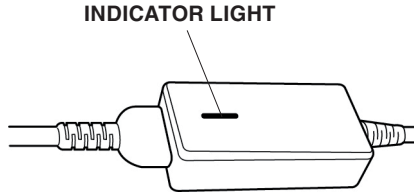
Instructions Pertaining to a Risk of Fire or Electric Shock

Important Safety Instructions

- Read all the instructions before using this product.
- This device should be supervised when used around children.
- Do not put fingers into the electric vehicle connector.
- Do not use this product if the flexible power cord or EV cable is frayed, has broken insulation, or any other signs of damage.
- Do not use this product if the enclosure or the EV connector is broken, cracked, open, or shows any other indication of damage.

3 Using Honda Portable Charging Kit

3.1 Indicator Light



The indicator light on your charger is the first thing you will notice when you are about to plug or unplug your vehicle. Before getting started, here is a simple explanation of the indicators.

NOTE: The following indicates a normal startup safety check.

When first plugged into a wall socket, the Amber, Blue and Red lights blink once.

Then the Blue light turns ON, followed by a blink of the Red light.

Lastly, the Blue light turns OFF, then ON again.

If the grid cord is changed from the previous charge, the system will reboot again.

AMBER Indicator

The Amber indicator illuminates to indicate the charger is rebooting after an error. Refer to the troubleshooting section for more information.

BLUE Indicator

When plugged into the wall socket, the Blue indicator illuminates to indicate the charger is ready to use. During charging, the Blue indicator will pulse on and off every 1.5 seconds. Refer to the troubleshooting section for more information.

RED Indicator

The Red indicator illuminates when the charger detects an error. If the red indicator illuminates, the charger will not deliver power to the vehicle. The error must be corrected before a charging cycle can begin or continue. Refer to the troubleshooting section for more information.

3 Using Honda Portable Charging Kit

NOTE: The red indicator turns on if the charger is not charging. The unit will turn OFF if a breaker or infrastructure GFCI is tripped.

⚠ WARNING

Electrocution Risk

You may be electrocuted, seriously injured or killed, if you use the charger when:

- **There is an electrical storm**
- **It is submerged in water or snow**
- **It is connected to an outlet that is submerged in water or snow**
- **It has damaged or missing components or wiring**

Do not use the charger if any component is damaged or missing, if it (or the outlet) is wet or submerged in liquid/snow, or there is an electrical storm.

If the charger becomes wet, do not use until it is completely dry for over 24 hour.

⚠ WARNING

You may be electrocuted, seriously injured, or killed if you:

- **use the charger when plug surfaces are exposed**
 - **insert your fingers into the charger coupler**
- Always fully insert charger plug into the outlet and never stick your fingers in the charger coupler.**

3.2 Charging Your Vehicle

1. **Make sure the vehicle is in Park (P). Insert the grid cord firmly into the control box. Then firmly insert the other end of the grid cord into the appropriate wall outlet.**

3 Using Honda Portable Charging Kit

⚠ WARNING

Improper use or handling of the charger can result in electrocution, serious injury or death, or fire.

To help avoid injury, death or fire:

- **Do not use an extension cord or a multi-plug adapter**
- **Only use a grounded electrical outlet installed/inspected by a qualified electrician**
- **Ensure all exterior outlets have weatherproof enclosures**

NOTE: Make sure the grid cord is fully inserted and flush with the control box before inserting the other end into the wall outlet. To remove the grid cord, firmly hold control box with hand and the grid cord with the other, then pull it firmly away from the control box.

2. When the grid cord is inserted into the NEMA 14-50 power outlet, the Amber, Blue and Red lights will blink once. Then the Blue light turns ON, followed by a blink of the Red light. Lastly, the Blue light turns OFF, then ON again. If you switch grid cords between charges, this startup system check will occur twice.

NOTICE

Use the charger only to supply power to electric vehicles equipped with an SAE J1772 compliant vehicle receptacle. For more information refer to the vehicles owner's manual.

3. Plug the coupler into your vehicle's charging inlet.
4. When charging begins, the Blue light pulses ON and OFF approximately every 1.5 seconds.

NOTE: When plugging the charger into an unfamiliar power outlet, it is a good practice to take a few minutes to observe the charging process and confirm the charger is supplying power before leaving the charger unattended.

3 Using Honda Portable Charging Kit

5. When charging ends, the Blue light turns solid blue.
6. To disconnect the coupler from the vehicle charge port:
Press the release button on the coupler, then pull the coupler away from the vehicle.

⚠ WARNING

Connecting or disconnecting the charger plug from the wall outlet while the vehicle coupler is engaged can result in injury, death or fire.

Before plugging or unplugging the charger from the wall outlet, ensure the vehicle coupler is not connected to the vehicle.

Always follow the provided connection or disconnection instructions.

NOTE:

- To safely discontinue charging at any time, follow the disconnect instructions in Step 6. Charging will automatically and safely stop. The Blue light remains ON (without blinking) when the coupler is removed.
- The Red light Indicator turns on if it is not charging. The unit will turn OFF if a breaker or infrastructure GFCI is tripped.

3 Using Honda Portable Charging Kit

⚠ WARNING

Improper use or handling of the charger can result in electrocution, serious injury or death, or fire.

To help avoid injury, death or fire:

- **Do not use an extension cord or a multi-plug adapter**
- **Only use a grounded electrical outlet installed/inspected by a qualified electrician**
- **Ensure all exterior outlets have weatherproof enclosures**

NOTE: For more information about how to charge your vehicle, including charge settings and scheduling, refer to the vehicle owner's manual.

3.3 Auto Restart

The Auto-Restart feature helps to ensure that your vehicle will be charged and ready for use when needed. A charge may be interrupted if an error is detected. Charging will resume once the error is no longer detected. The red indicator illuminates during an error condition.

The exception to immediate Auto-Restart is when the interruption is due to a ground fault circuit interruption (GFCI). The charger will attempt to restart 15 minutes after this happens. After a fourth attempt to restart, the charger will shut down and the red indicator will stay ON.

If the fault persists, do not continue to try to charge your vehicle. Contact the Honda Help Center - URL: <https://mygarage.honda.com/s/help-honda>

4 Care Instructions

Do not use hard cleaners or solvents as this may damage your Honda portable charging kit. Do not kink or place undue stress on the charger cables. If the charger overheats, bring out of direct sunlight.

⚠ WARNING

To clean the charger, disconnect it from the outlet and use a clean cloth dampened with water or a mild detergent solution. Do not use chemicals or solvents. Do not submerge in cleaning fluid or other liquids.

Failure to follow these instructions could result in death or serious injury.

TROUBLESHOOTING GUIDE

Please refer to this Troubleshooting Guide for possible solutions to common errors or difficulties with charging your vehicle using your mobile charger.

⚠ WARNING

Do not operate your charger with a damaged adapter, cable, charger coupler, or control box. Visually inspect the cable, charge coupler, and control box for damage before each use. Do not operate if any visual damage is apparent anywhere and contact your contractual partner.

⚠ WARNING

You may be seriously injured or killed if you:

- **Open or disassemble the charger**
- **Attempt to modify or service the charger**
- **Drop the control box or coupler**
- **Use aftermarket parts**

There are no user repairable parts inside; do not open, modify, or attempt to service the charger.

QUICK REMINDER...

AMBER LIGHT

Reduced charging or recoverable fault which may interrupt charging.

BLUE LIGHT

The charger is ready to use or is charging.

RED LIGHT

Fault which may interrupt charging.

5 Troubleshooting

When you plug in your Honda portable charging kit, the following sequence indicates a normal startup safety check:

1. The Amber, Blue and Red lights blink once.
2. Then the Blue light turns ON, followed by a blink of the Red light.
3. Lastly, the Blue light turns OFF, then ON again.

A Red light may be triggered by several sources including the charger, the utility service, or the vehicle. See the Troubleshooting tips below.

The Red light turns ON when the charger detects an error, whether it is connected to your vehicle or not. When the Red light is ON, the charger will not deliver power to the vehicle. The error must be corrected before charging begins or resumes.

CORDSET SYSTEM STATES	AMBER	BLUE	RED	NOTES
Unpowered				
Startup			Solid	
	Solid	Solid	Solid	Honda portable charging kit is initializing (starting up)
			Solid	
		Fade		

5 Troubleshooting

CORDSET SYSTEM STATES	AMBER	BLUE	RED	NOTES
Startup		Solid	Blink	
Disconnected		Solid		
Transition		Blink		
Connected		Solid		
		Solid	Blink	
Charging		Pulsing		
Reduced Charging / CCID / IC-CPD	Solid	Pulsing		Honda portable charging kit will continue to charge EV at a reduced current. The Honda portable charging kit temperature is high. Consider moving to a cooler area to charge or waiting for a cooler time of day.
Reduced Charging / Grid	Blink	Pulsing		Honda portable charging kit will continue to charge EV at a reduced current. The Honda portable charging kit temperature is high. Consider moving to a cooler area to charge or waiting for a cooler time of day.

5 Troubleshooting

CORDSET SYSTEM STATES	AMBER	BLUE	RED	NOTES
Ground Leakage Fault			Blink	The Honda portable charging kit will enter Auto-Reboot state after 20 seconds, and the fault will be resolved if ground leakage is no longer present.
Auto-reboot Fault	Solid	Solid	Solid	The Honda portable charging kit will enter Auto-Reboot state after 1 minute, and the fault will be resolved if the fault is no longer present.
Recoverable Fault	Solid			<p>The Honda portable charging kit will auto-recover if the fault is no longer present.</p> <p>If the Honda portable charging kit does not recover, then the user should disconnect the Honda portable charging kit from both the grid and the EV. The user should then try recharging.</p> <p>If the Honda portable charging kit is warm or in a hot environment, the user should charge the EV in a cooler environment.</p> <p>If the fault persists, please contact the Honda Help Center - URL: https://mygarage.honda.com/s/help-honda</p>

5 Troubleshooting

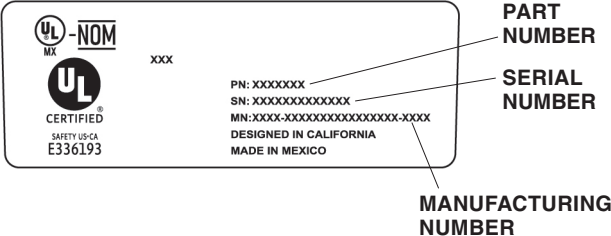
CORDSET SYSTEM STATES	AMBER	BLUE	RED	NOTES
Non-Recoverable Fault			Solid	The Honda portable charging kit will not recover, and the user should disconnect the Honda portable charging kit from both the grid and the EV. The user should then retry charging. If the fault persists, please contact the Honda Help Center - URL: https://mygarage.honda.com/s/help-honda

NOTICE

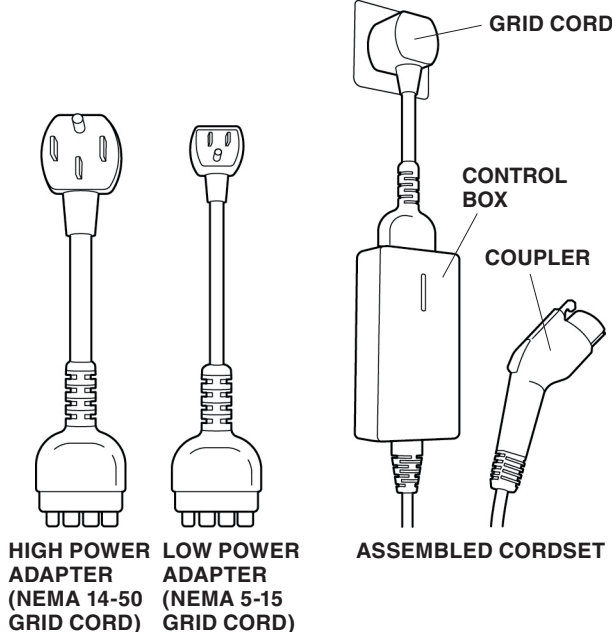
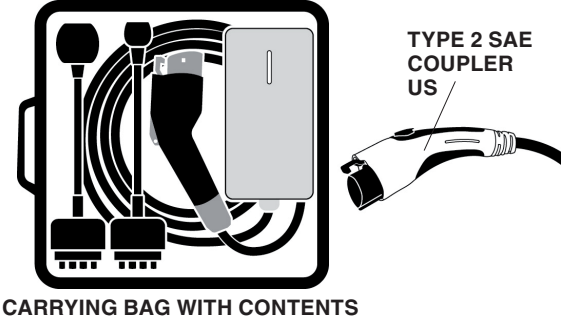
Store the charger in a clean dry area between -22°F to +185°F (-30°C to 85°C) and do not use the charger outside the operating temperature range of -22°F to +122°F (-30°C to 50°C).

6 Technical Data

6.1 Label Product ID SAE



6.2 Unit Description



Charger model	SAE
Voltage (V AC)	120 - 240 V AC
Maximum current (A)	32 amps max continuous
Frequency (Hz)	60 Hz
Power draw at idle (W)	<2.5 watts
During charging (W)	<6.5 watts
Cable length (ft / m)	Approx. 25 ft/7.5 m
Weight: (lbs / kg)	8.4 lbs (3.8 kg)
Temperature – operating: (C / F)	-22 °F to +122 °F -30 °C to + 50 °C
Temperature – storage: (C / F)	-22 °F to +185 °F -30 °C to +85 °C
Maximum CCID environmental rating:	IP67
Ventilation	Not required
Specifications are subject to change without notice.	
Usable for Indoor and Outdoor	

The Honda portable charging kit comes standard with two adapters:

1. High Power Adapter (NEMA 14-50)
2. Low Power Adapter (NEMA 5-15)

6.3 Safety Features

The Honda portable charging kit is designed with your safety as the highest priority and includes the following safety features to protect against the risk of electric shock:

- **Service Ground Check:** The charger constantly checks for the presence of a service ground connection. If the service ground ever fails, the charger red indicator turns ON and shuts down power to the vehicle.
- **Thermal Event Sensor:** Control box senses out-of-ordinary thermal events and will decrease charging current or shut the unit down if required.
- **GFCI Protection:** The Honda portable charging kit is equipped with a ground fault circuit interruption (GFCI) reaction system to protect against electric shock. If the control box detects an output ground fault, it will shut down power to the output cable and illuminate the RED indicator.

6 Technical Data

⚠ CAUTION

To reduce the risk of fire, connect only to a circuit provided with 50 amperes maximum branch circuit over-current protection in accordance with the ANSI/NFPA 70 National Electrical.

- **Insulation:** The control box, adapter, cable assembly, and charge coupler are completely insulated (no exposed live parts) to protect against electric shock.
- **Unintentional Disconnection:** The charge coupler is designed to minimize unintentional disconnection. A pilot signal wire in the cable and charge coupler eliminates the possibility of electric shock when not connected to a vehicle or if an unintended disconnect occurs during a charge. Disconnection during charging is safe.

⚠ CAUTION

Failure to properly position and secure the charger cable can result in personal injury or damage to the charger.
Safely position the charger cable to avoid driving or tripping over it or other actions likely to injure people or damage it.
Always stow the charger in a safe, protected area or container.

7 Disposal

- The symbol of the crossed-out waste bin indicates that this electrical/electronic device must not be disposed of in household waste at the end of its service life. Dispose of the device free of charge at a local collection point for electrical/electronic devices. Addresses can be obtained from your city or local authority. Separate collection of electrical and electronic devices enables re-use, material recycling or other forms of re-utilization of waste equipment while also avoiding the negative effects of hazardous substances which may be contained in the devices on the environment and for human health.
- Dispose of packaging in corresponding recycling container in accordance with national regulations.



8 FCC Information

As required by the FCC:

This device complies with Part 15 of the FCC rules. Operation is subject to the following two conditions: (1) This device may not cause harmful interference, and (2) this device must accept any interference received, including interference that may cause undesired operation.

This product has been designed to protect against Radio Frequency Interference (RFI). However, there are some instances where high-powered radio signals or nearby Radio Frequency (RF) producing equipment could affect operation.

Changes or modifications not expressly approved by the party responsible for compliance could void the user's authority to operate the equipment.

9 Customer Service Information

Honda dealership personnel are trained professionals able to deal with any problems you may encounter with your vehicle. If, however, you are faced with a problem that they cannot resolve to your satisfaction, contact Honda Customer Services.

American Honda Motor Co., Inc.
Honda Automobile Customer Service
Mail Stop CHI-5
1919 Torrance Blvd.
Torrance, CA 90501-2746
Tel: 1 (800) 999-1009

