



## INSTALLATION INSTRUCTIONS

### Accessory

17" ALUMINUM WHEEL  
P/N 08W17-TXM-100

### Application

2021 INSIGHT

### Publications No.

VERSION 1

### Issue Date

MAR 2020

### PARTS LIST

Aluminum wheel  
(The illustration may differ from the actual wheel.)



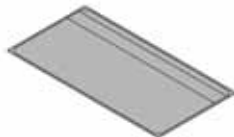
Wheel center cap  
(The illustration may differ from the actual center cap.)



Valve



TPMS Information  
(Give this information to your customer.)  
(May not be used)



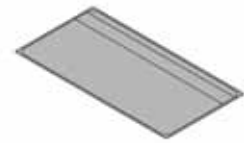
Tire pressure information label  
(XM17A: With spare tire)  
(May not be used)



Tire pressure information label  
(XM17B: Without spare tire)  
(May not be used)



Wheel cleaning Information  
(Give this information to your customer.)



Supplemental Information  
(Give this information to your customer.)  
(May not be used)



### TOOLS AND SUPPLIES REQUIRED

- Isopropyl alcohol
- Shop towel
- HDS

### SPECIFICATIONS

#### Models not equipped with standard 17" wheels:

Rim size	17 x 7J (inset 45)	
Tire size	215/50R17 91H	
Bolt hole PCD	114.3 (5 holes)	
Tire pressure	Front	35 psi (240 kPa)
	Rear	32 psi (220 kPa)

#### Models equipped with standard 17" wheels:

Refer to the online owner's manual.

## INSTALLATION

**Customer Information:** The information in this installation instruction is intended for use only by skilled technicians who have the proper tools, equipment, and training to correctly and safely add equipment to your vehicle. These procedures should not be attempted by “do-it-yourselfers.”

### NOTE:

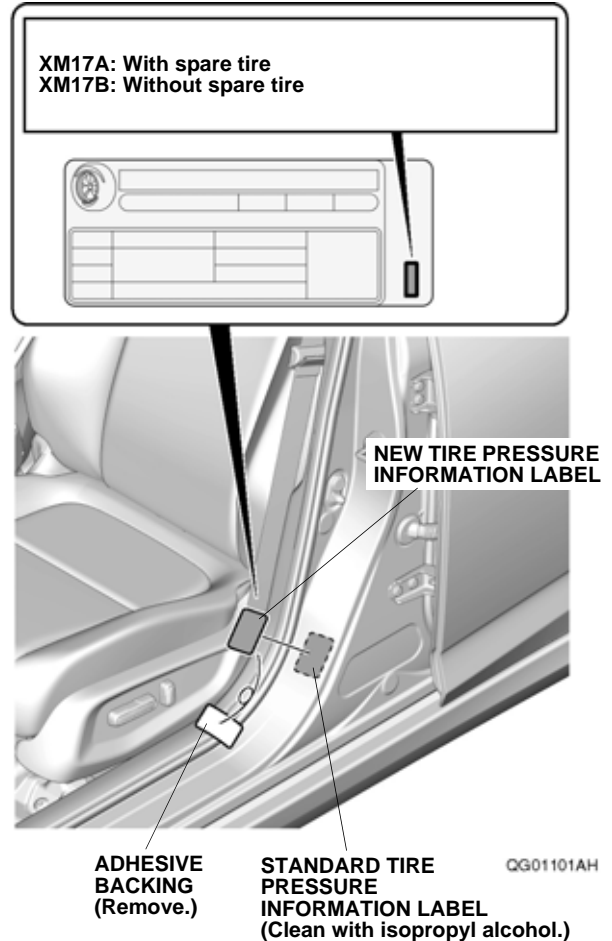
- The illustrations of the aluminum wheels are shown for reference purposes only.
- Install the correct size tire.
- Use a tire changer to install and remove the tires as described in the operation manual furnished with the tire changer. Do not use a tire lever to install and remove the tires as it may cause damage to the tire and aluminum wheel.
- The wheel nut torque is 80 lb-ft (108 N·m).
- This kit should be installed only if the ambient air temperature is 15°C (60°F) or above.
- To allow the adhesive to cure, do not wash the vehicle for 24 hours. Make sure the customer is aware of this.

### Models equipped with standard 17” wheels

Be sure to give the wheel cleaning information to your customer.

### Do steps 1 through 17 for trim levels not equipped with standard 17” wheels.

1. Open the driver’s door. Using isopropyl alcohol on a shop towel, thoroughly clean the area where the new tire pressure information label will attach. Remove the adhesive backing from the new tire pressure information label, and attach it over the standard tire pressure information label as shown.



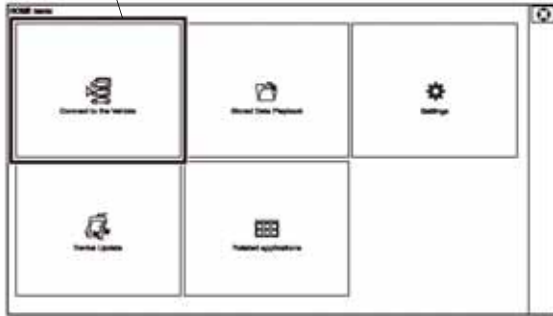
2. Attach the “Supplemental Information” page included in this kit into the owner’s guide as described on the “Important Information to Dealer” page.

## Inch-up Tire Pressure Programming

NOTE: Make sure you are using the latest HDS version as described on SIS.

3. Connect the HDS to the data link connector, then turn the ignition to ON.

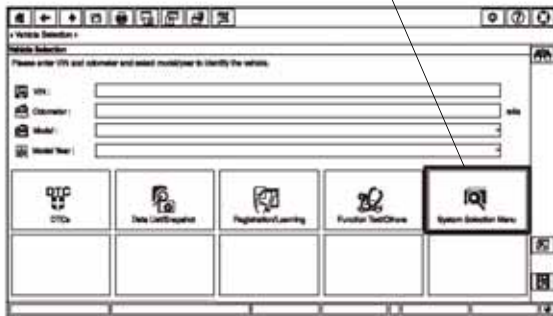
Select  
Connect to the Vehicle.



QF40602AN

4. Start the Diagnostic System, then select the **Connect to the Vehicle**.
5. Select **System Selection Menu**.

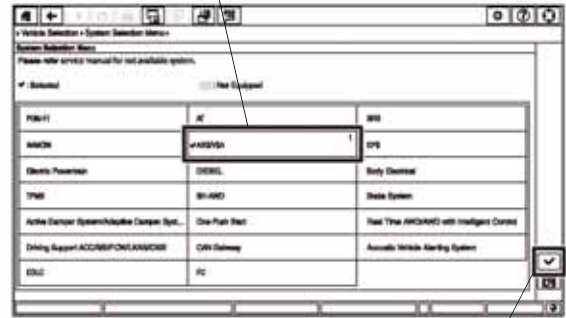
Select  
System Selection Menu.



QF40603BN

6. Select **ABS/VSA**, and click the check button.

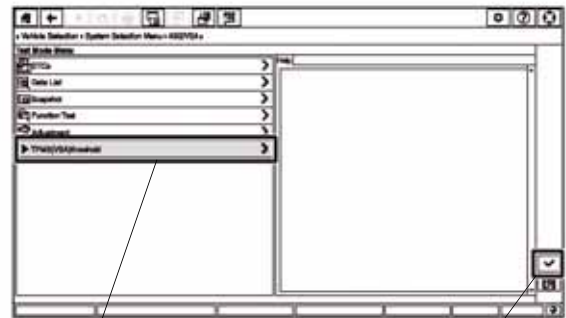
Select  
ABS/VSA.



CHECK BUTTON

QF40604BN

7. Select **TPMS (VSA) threshold**, and click the check button.



Select  
TPMS (VSA) threshold.

CHECK BUTTON

QF40605BN

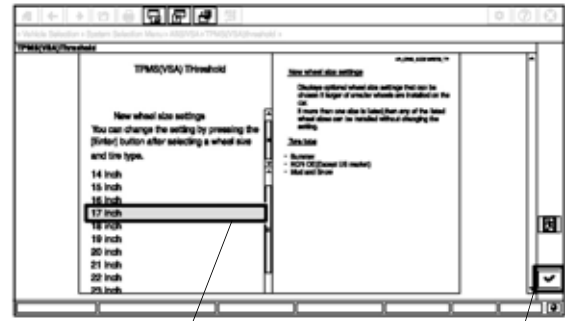
8. Select **YES**.



Select **YES**.

QF40606BN

10. Select **17 inch**, and click the check button.

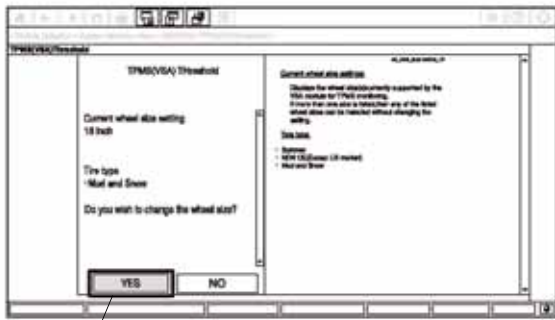


Select **17 inch**.

**CHECK BUTTON**

QG01102AH

9. Select **YES**.



Select **YES**.

QF40607BN

11. Select **Mud and snow**, and click the check button.



Select **Mud and snow**.

**CHECK BUTTON**

QF40609BN

12. When you see the **Turn the ignition switch off**, turn the ignition to OFF.



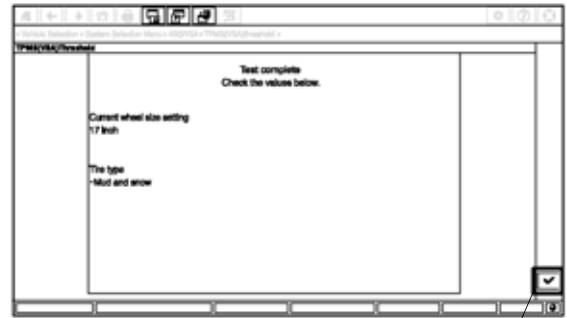
QF40610BN

13. When you see the **Turn the ignition switch on**, turn the ignition to ON.



QF40611BN

14. Click the check button.



CHECK BUTTON

QG01103AH

15. Disconnect the HDS from the data link connector.
16. Do the TPMS calibration according to the instructions in the service information (TPMS Calibration).
17. After finishing the work, write tire size, tire pressure, HDS version, dealer name, technician's signature, and date in "Service History Page for Honda Accessory Alloy Wheels" page included in this kit.
- Be sure to explain the contents of the "Supplemental Information" when delivering the vehicle to your customer.
  - Be sure to give the TPMS information and wheel cleaning information to your customer.

## Deflation Warning System Threshold Rewriting

- If the 16 inch wheels are to be installed back on the vehicle, you must change the threshold value with the HDS; refer to steps 3 through 16.
- For step 10, select the 16 inch.  
NOTE: If 16 inch is displayed on the current wheel size settings, go to step 15.
- After finishing the work, record the tire size, tire pressure, HDS version, and dealer name in the “Service History Page for Honda Accessory Alloy Wheels” included in this kit. Then, sign and date the page.
- Make sure your customer is explained the supplemental information contents at vehicle delivery.
- Make sure your customer receives the TPMS and wheel cleaning information.